

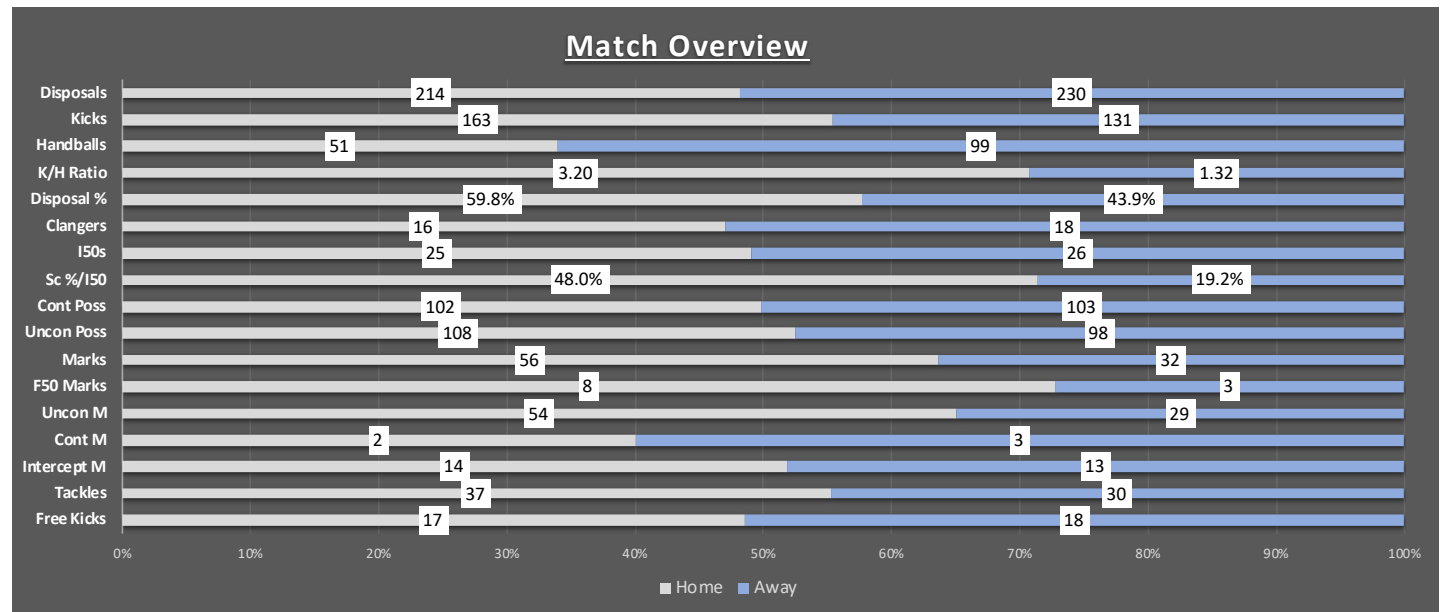


Overview	Home	Away	Diff
Disposals	214	230	-16
Kicks	163	131	32
Handballs	51	99	-48
K/H Ratio	3.20	1.32	1.87
Disposal %	59.8%	43.9%	15.9%
Clangers	16	18	-2
I50s	25	26	-1
Sc %/I50	48.0%	19.2%	28.8%
Cont Poss	102	103	-1
Uncon Poss	108	98	10
Marks	56	32	24
F50 Marks	8	3	5
Uncon M	54	29	25
Cont M	2	3	-1
Intercept M	14	13	1
Tackles	37	30	7
Free Kicks	17	18	-1

Stoppage	Home	Away	Diff
BU	7	10	-3
CSB	5	3	2
TI	3	3	0
Total CLR	15	16	-1
Hit Outs	25	13	12
Hit Outs TA	4	1	3

Offence	Home	Away	Diff
I50s	25	26	-1
Sc %/I50	48.0%	19.2%	28.8%
Deep	7	11	-4
Shallow	18	15	3
F50 Marks	8	3	5
R. Behinds			

Possession	Home	Away	Diff
Loose Ball	56	47	9
Hard Ball	28	22	6
Frees For	17	18	-1
Cont M	2	3	-1
Total Cont	102	103	-1
HB Rec	38	43	-5
Gathers	16	26	-10
Uncon M	54	29	25
Total Uncon	108	98	10



**GAME LEADERS**

HOME				AWAY			
Player	Disposals	Player	Tackles	Player	Disposals	Player	Tackles
02.Grace Moodie	24	38.Jaida Tabb	5	14.Annabel Pettigrew	22	01.Mackenzie Findlay	6
14.Madison Goodwin	16	04.Charlotte Taylor	3	01.Mackenzie Findlay	20	03.Holly O'Flaherty	4
42.Courtney Browne	15	14.Madison Goodwin	3	11.Kitty Adams	19	19.Montana Dove	3
		07.Tiarnah Isua	3			14.Annabel Pettigrew	3
		08.Lucy Bellinger	3				

Player	CP	Player	CLR	Player	CP	Player	CLR
02.Grace Moodie	9	33.Ebony Milne	4	11.Kitty Adams	10	18.Keyshia Matenga	3
14.Madison Goodwin	9	14.Madison Goodwin	3	14.Annabel Pettigrew	9	14.Annabel Pettigrew	3
05.Jess Matthews	9	04.Charlotte Taylor	2	26.Uma Brennan	8	26.Uma Brennan	2
						05.Georgia Smith	2

PLAYER	DISPOSAL STATISTICS														CLEARANCES				POSSESSIONS AND MARKING						OTHER								
	Home	D	E	IE	TO	%	K	KE	KIE	KTO	K%	HB	HB E	HB IE	HB TO	HB%	CLR BU	CLR CSB	CLR TI	CLR	CP	UP	CM	UM	F50 M	INTM	HO	HOTA	T	FK F	FK A	I50	G
02.Grace Moodie	24	20	4	0	83%	19	16	3	0	83%	5	4	1	0	80%	1	0	0	1	9	10	0	5	0	2	0	0	2	1	1	2	0	0
14.Madison Goodwin	16	8	7	1	50%	12	4	7	1	50%	4	4	0	0	100%	2	0	1	3	9	7	0	3	1	0	4	0	3	2	1	1	0	0
42.Courtney Browne	15	8	7	0	53%	11	6	5	0	53%	4	2	2	0	50%	0	1	0	1	6	9	0	5	0	3	0	0	2	0	0	3	0	0
04.Charlotte Taylor	14	8	5	1	57%	11	5	5	1	57%	3	3	0	0	100%	2	0	0	2	5	8	0	4	0	0	0	0	3	1	2	0	0	0
05.Jess Matthews	14	8	5	1	57%	11	5	5	1	57%	3	3	0	0	100%	0	0	0	0	9	5	0	3	0	3	0	0	1	2	2	3	0	0
33.Ebony Milne	14	9	3	2	64%	13	8	3	2	64%	1	1	0	0	100%	1	2	1	4	7	7	0	4	1	1	0	0	2	0	0	3	1	0
07.Tiarnah Isua	13	4	8	1	31%	12	4	7	1	31%	1	0	1	0	0%	0	0	0	0	8	6	0	1	0	0	0	0	3	1	2	4	0	2
08.Lucy Bellinger	11	8	2	1	73%	9	6	2	1	73%	2	2	0	0	100%	1	0	0	1	5	6	0	5	2	1	0	0	3	0	0	0	0	0
20.Peppa Poultney	11	8	2	1	73%	6	3	2	1	73%	5	5	0	0	100%	0	0	1	1	6	4	0	3	0	1	19	4	1	1	1	1	0	1
06.Courtney McDonnell	10	6	3	1	60%	8	4	3	1	60%	2	2	0	0	100%	0	0	0	0	4	5	0	2	0	0	0	0	0	2	1	0	2	1
13.Theresia Meissner	10	6	4	0	60%	7	4	3	0	60%	3	2	1	0	67%	0	0	0	0	5	5	1	1	0	1	0	0	1	0	0	0	0	0
38.Jaida Tabb	10	4	5	1	40%	8	2	5	1	40%	2	2	0	0	100%	0	0	0	0	6	4	0	1	0	0	0	0	5	3	0	2	0	1
18.Madie Satyasiv	8	5	2	1	63%	6	3	2	1	63%	2	2	0	0	100%	0	1	0	1	4	5	0	5	0	1	0	0	2	1	3	1	0	0
29.Camilla Burnett	7	4	2	1	57%	5	3	1	1	57%	2	1	1	0	50%	0	0	0	0	3	4	0	0	0	0	1	0	1	1	1	0	1	0
44.Adrienne Keeffe	7	4	3	0	57%	5	2	3	0	57%	2	2	0	0	100%	0	0	0	0	3	4	1	4	4	0	1	0	0	0	0	1	2	1
10.Madison Twin	6	4	2	0	67%	2	1	1	0	67%	4	3	1	0	75%	0	0	0	0	5	2	0	1	0	0	0	0	1	0	0	0	0	0
35.Sophie Wheeler	6	2	3	1	33%	5	1	3	1	33%	1	1	0	0	100%	0	0	0	0	0	6	0	2	0	0	0	0	2	0	2	0	0	0
21.Georgia Hewett	5	3	1	1	60%	5	3	1	1	60%	0	0	0	0	-	0	1	0	1	2	4	0	2	0	1	0	0	1	1	2	0	0	0
31.Taylah Day	5	2	2	1	40%	3	0	2	1	40%	2	2	0	0	100%	0	0	0	0	2	3	0	1	0	0	0	0	1	0	0	2	0	0
11.Mia Walsh	4	3	0	1	75%	2	1	0	1	75%	2	2	0	0	100%	0	0	0	0	2	1	0	1	0	0	0	0	1	0	0	0	0	0
40.Jamie Howell	4	4	0	0	100%	3	3	0	0	100%	1	1	0	0	100%	0	0	0	0	2	3	0	1	0	0	0	0	2	1	0	2	0	0
<b>Total</b>	<b>214</b>	<b>128</b>	<b>70</b>	<b>16</b>	<b>60%</b>	<b>163</b>	<b>84</b>	<b>63</b>	<b>16</b>	<b>52%</b>	<b>51</b>	<b>44</b>	<b>7</b>	<b>0</b>	<b>86%</b>	<b>7</b>	<b>5</b>	<b>3</b>	<b>15</b>	<b>102</b>	<b>108</b>	<b>2</b>	<b>54</b>	<b>8</b>	<b>14</b>	<b>25</b>	<b>4</b>	<b>37</b>			<b>25</b>	<b>6</b>	<b>6</b>

PLAYER	DISPOSAL STATISTICS														CLEARANCES				POSSESSIONS AND MARKING						OTHER									
	Away	D	E	IE	TO	%	K	KE	KIE	KTO	K%	HB	HB E	HB IE	HB TO	HB%	CLR BU	CLR CSB	CLR TI	CLR	CP	UP	CM	UM	F50 M	INTM	HO	HOTA	T	FK F	FK A	I50	G	B
14.Annabel Pettigrew	22	9	10	3	41%	17	6	8	3	35%	5	3	2	0	60%	2	0	1	3	9	11	0	4	0	4	0	0	3	0	4	1	0	0	
01.Mackenzie Findlay	20	7	11	2	35%	7	2	5	0	29%	13	5	6	2	38%	1	0	0	1	5	13	0	1	0	1	0	0	6	0	0	3	0	0	
11.Kitty Adams	19	13	5	1	68%	11	6	4	1	55%	8	7	1	0	88%	0	0	0	0	10	7	1	4	1	1	0	0	1	3	1	5	0	0	
03.Holly O'Flaherty	16	9	5	2	56%	10	5	3	2	50%	6	4	2	0	67%	1	0	0	1	5	8	0	0	0	0	0	4	1	1	2	0	0		
07.Chloe Litherland	16	8	7	1	50%	7	3	4	0	43%	9	5	3	1	56%	0	0	0	0	7	7	0	3	0	2	0	0	0	0	2	1	0	0	
18.Keyshia Matenga	16	8	6	2	50%	6	1	3	2	17%	10	7	3	0	70%	2	0	1	3	5	8	0	2	0	1	0	0	1	0	0	1	0	0	
30.Kitara Farrar	16	6	9	1	38%	9	5	3	1	56%	7	1	6	0	14%	0	1	0	1	5	7	0	3	1	1	0	0	1	2	0	4	1	2	
08.Reggie Bradshaw	15	1	13	1	7%	9	0	8	1	0%	6	1	5	0	17%	1	0	0	1	7	5	0	0	0	0	0	2	2	0	0	0	0	0	
15.Daisy Carter	13	10	2	1	77%	11	8	2	1	73%	2	2	0	0	100%	0	0	0	0	7	8	0	3	0	1	0	0	0	1	2	3	1	0	
26.Uma Brennan	13	6	7	0	46%	3	1	2	0	33%	10	5	5	0	50%	2	0	0	2	8	2	0	1	0	0	0	0	2	1	0	1	0	0	
17.Kylie Welsh	12	5	7	0	42%	8	4	4	0	50%	4	1	3	0	25%	0	0	0	0	6	5	0	2	0	1	1	0	1	2	0	0	0	0	
05.Georgia Smith	8	3	4	1	38%	8	3	4	1	38%	0	0	0	0	-	1	1	0	2	5	3	1	2	0	0	0	1	1	1	2	0	1		
21.Courtney Doran	8	5	3	0	63%	2	0	2	0	0%	6	5	1	0	83%	0	0	0	0	1	4	0	0	0	0	11	1	0	0	0	0	0	0	0
16.Tarin Moke	6	0	6	0	0%	3	0	3	0	0%	3	0	3	0	0%	0	0	1	1	4	1	0	0	0	0	0	1	0	1	1	1	0	0	
23.Kate Horsham	6	2	4	0	33%	2	2	0	0	100%	4	0	4	0	0%	0	0	0	0	5	0	0	0	0	0	1	0	1	1	1	1	0	0	
12.Lauren Shackleton	5	2	3	0	40%	3	1	2	0	33%	2	1	1	0	50%	0	0	0	0	2	4	0	1	1	0	0	0	0	0	1	0	0	0	0
13.Avro Beecham	5	2	3	0	40%	4	2	2	0	50%	1	0	1	0	0%	0	0	0	0	2	0	1	0	0	1	0	0	0	1	0	0	0	0	0
19.Montana Dove	5	2	2	1	40%	5	2	2	1	40%	0	0	0	0	-	0	1	0	1	2	3	0	2	0	0	0	0	3	1	0	0	0	0	
29.Kristina Cartwright	4	3	0	1	75%	3	2	0	1	67%	1	1	0	0	100%	0	0	0	0	3	1	0	0	0	0	0	0	1	2	0	1	0	0	
27.Eloise Ayre	3	0	2	1	0%	2	0	1	1	0%	1	0	1	0	0%	0	0	0	0	2	1	0	1	0	0	0	0	1	0	0	0	0	0	0
20.Madeline Wilson	2	0	2	0	0%	1	0	1	0	0%	1	0	1	0	0%	0	0	0	0	3	0	0	0	0	0	0	0	1	0	2	0	0	0	0
<b>Total</b>	<b>230</b>	<b>101</b>	<b>111</b>	<b>18</b>	<b>44%</b>	<b>131</b>	<b>53</b>	<b>63</b>	<b>15</b>	<b>40%</b>	<b>99</b>	<b>48</b>	<b>48</b>	<b>3</b>	<b>48%</b>	<b>10</b>	<b>3</b>	<b>3</b>	<b>16</b>	<b>103</b>	<b>98</b>	<b>3</b>	<b>29</b>	<b>3</b>	<b>13</b>	<b>13</b>	<b>1</b>	<b>30</b>			<b>26</b>	<b>2</b>	<b>3</b>	